

# Sailing instructions

## **SPORTBOAT CUP 2025**

### **Open Dutch Championship Yngling and SB20**

### **Class Championship MaxFun 25 and J22**

Open to sportboten and other classes as:  
Draak, Etchell, FarEast 28R

**September 12, 2025 – September 14, 2025**

Enkhuizen the Netherlands



Organizing Authority:

Enkhuizer Watersport Vereniging 'Almere' (EWVA)

under the auspices of

the Royal Netherlands Watersport Association (RNWA)

EWVA  
Compagnieshaven 3c  
1601 ZA Enkhuizen The Netherlands

[www.ewva.nl](http://www.ewva.nl)

## 1 RULES

See NoR 1

In addition to the Notice of Race the following *Rules* are changed:

RRS A5.1 and A5.2 see 12.3

RRS 35, A5.1, A5.2 and A10 see 16.2

RRS 62.1(a) see 16.3.

## 2 SAILING INSTRUCTIONS

2.1 Sailing instructions are available on the website EWVA.nl

No hard copy versions will be available.

2.2 Any change to the sailing instructions will be posted before 09.00 on the day it will take effect, except that any change to the schedule of races will be posted by 20.00 on the day before it will take effect.

## 3 COMMUNICATION


See NoR 3

## 4 CODE OF CONDUCT

4.1 [DP] Competitors and support persons shall comply with reasonable requests from race officials.

## 5 SIGNALS MADE ASHORE

5.1 Signals made ashore will be displayed at the terrace of the EWVA Clubhouse.

5.2 When flag AP  is displayed ashore, '1 minute' is replaced with 'not less than 45 minutes' in the race signal AP.

5.3 A black 1 or 2 on a yellow board: today's races will be started on Race Area 1 or 2.

## 6 SCHEDULE OF RACES

See NoR 9

## 7 CLASS FLAGS AND STARTING SEQUENCE

7.1 The starting sequence will be published on Friday 13 September 20:00.

In case the starting sequence is altered on the water, this shall be indicated by the second substitute flag and one sound signal.

7.3 Class flags:

Draak	D flag	ORC	O flag
Etchels	E flag	SB20	H flag
Max Fun	F flag	J22	J flag
J 80	G flag	Yngling	Yellow flag

## 8 RACING AREAS

Addendum B of the SI shows the location of the race areas.

## 9 COURSES

9.1 The diagram(s) in SI Addendum B show(s) the courses, the order in which marks are to be passed, and the side on which each mark is to be left.

9.2 The approximate distance from the midpoint of the starting line to mark 1 will be 0.8 – 1.5 Nm

## 10 MARKS

- 10.1 Marks will be orange inflatable cylinders.
- 10.2 ILM and Spreader will be an inflatable yellow cylinder.
- 10.3 A race committee vessel signaling a change of a leg of the course is a mark as provided in SI 13.1.

## 11 OBSTRUCTIONS

Not applicable

## 12 THE START

- 12.1 To alert boats that a race or sequence of races will begin soon, the orange starting line flag will be displayed with one sound at least five minutes before a warning signal is made.
- 12.2 The starting line will be between a mast displaying an orange flag on the race committee signal vessel at the starboard end and the course side of an inflatable yellow cylinder at the port end.
- 12.3 A boat that does not start within 4 minutes after her starting signal will be scored Did Not Start without a hearing. This changes RRS A5.1 and A5.2.

## 13 CHANGE OF THE NEXT LEG OF THE COURSE

- 13.1 To change the next leg of the course, the race committee will move the original marks (or the finishing line) to a new position.

## 14 THE FINISH

- 14.1 The finishing line will be between a mast displaying a blue flag on the race committee signal vessel at the starboard end a mast displaying a blue flag on a RIB at the port end.

## 15 PENALTY SYSTEM

Not applicable

## 16 TIME LIMITS AND TARGET TIMES

- 16.1 Time limits and target times are as follows:

TIME LIMIT	MINUTES
Mark 1 time limit	15
Target time	70
Finishing window	15

- 16.2 Boats failing to finish within the Finishing Window, and not subsequently retiring, penalized or given redress, will be scored Time Limit Expired (TLE) without a hearing. A boat scored TLE shall be scored points for the finishing place one more than the points scored by the last boat that finished within the Finishing Window. This changes RRS 35, A5.1, A5.2 and A10.
- 16.3 Failure to meet the target time will not be grounds for redress. This changes RRS 62.1(a).

## 17 HEARING REQUEST

- 17.1 For each class the protest time limit is 60 minutes after the last boat has finished the last race of the day or the race committee signals no more racing today, whichever is later.  
The time limit will be posted on the official notice board.
- 17.2 Hearing request forms are available at the race office located at the regatta office. Protests and requests for redress or reopening shall be delivered there within the appropriate time limit.
- 17.3 Notices will be posted no later than 30 minutes after the protest time limit to inform competitors of hearings in which they are parties or named as witnesses. Hearings will be held in the jury room, located at the KNRM, next to the EWVA Clubhouse.

**18 [NP][DP] SAFETY REGULATIONS**

- 18.1. A boat that retires from a race shall notify the race committee as soon as possible.

**19 REPLACEMENT OF CREW OR EQUIPMENT**

- 19.1. Substitution of competitors will not be allowed without prior written approval of the race committee.  
Replacement of the responsible person is not allowed.
- 19.2. Substitution of marked damaged or lost equipment will not be allowed unless approved by the race committee.  
Requests for substitution shall be made to the committee at the first reasonable opportunity, which may be after the race.

**20 EQUIPMENT CHECKS AND EVENT MEASUREMENT**

- 20.1. A boat or equipment may be inspected at any time for compliance with the class rules, notice of race and sailing instructions.
- 20.2. [DP] When instructed by a race official on the water, a boat shall proceed to a designated area for inspection.

**21 SUPPLIED BOATS**

Not applicable

**22 OFFICAL VESSELS**

Official vessels will be identified as follows: an EWVA flag

**23 [DP] SUPPORT TEAMS**

Team leaders, coaches and other support persons shall stay outside areas where boats are racing from the time of the preparatory signal for the first start until all boats have finished or retired or the race committee signals a postponement, general recall or abandonment.

**24 TRASH DISPOSAL**

Trash may be placed aboard official or support persons boats.

**25 ORGANISATIE**

The race officer Henk Plaatje

2e race officer Marcel Keesman

The chairman of the jury Jan Verjaal

The chairman of the technical committee:

Yngling Peter Spruit

SB20 Bastiaan van Nunen / Pascal Bakker

## Addendum A

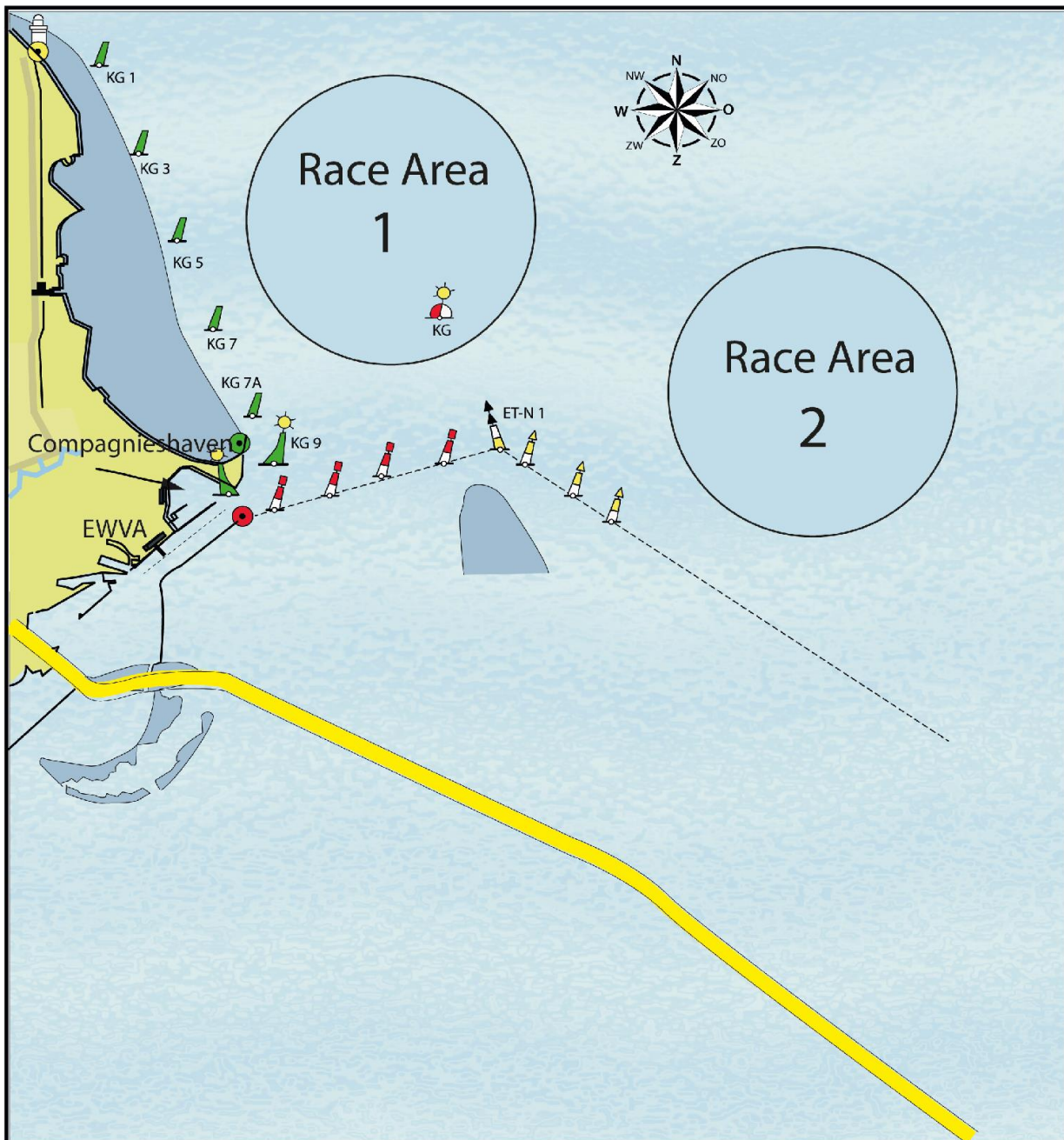
## Event location



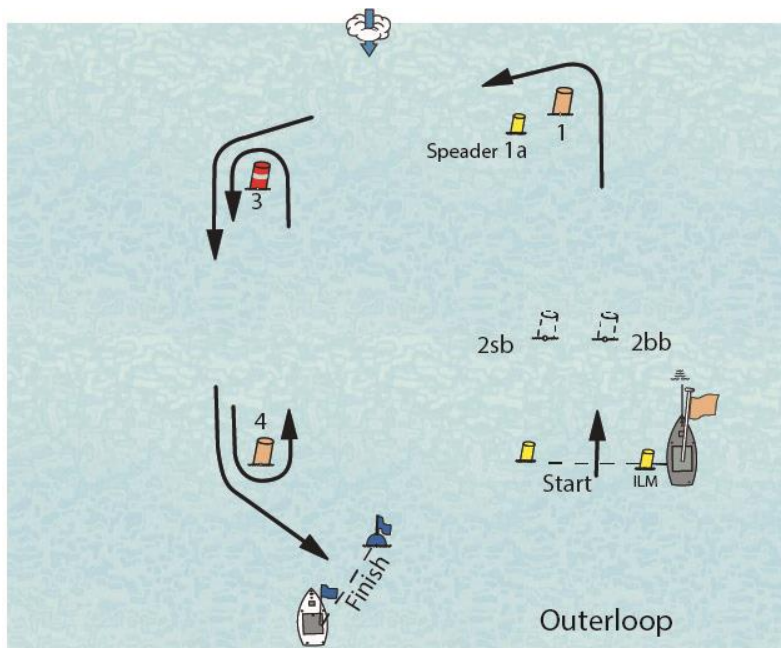
1. EWVA Clubhouse (Race Office, BBQ)
2. KNRM (Juryroom)
3. Crane
4. Slipway
5. Trailer parking
6. Harbourmaster / Toilet building
7. Minimarket
8. Joosten Yacht Supplies Shop



## Addendum B Race Area



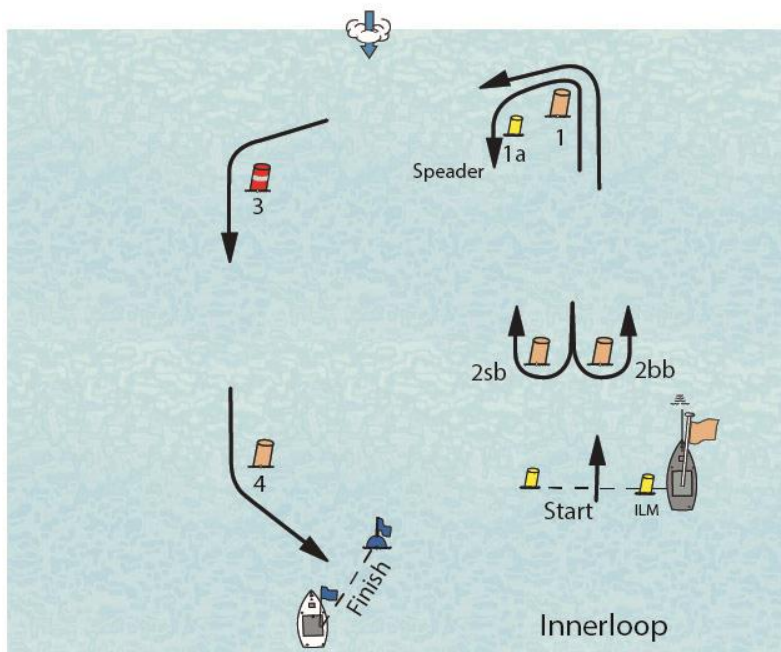
## Addendum C The Courses



Baan 1 Start - 1 - 1a - 3 - 4 - Finish

Baan 2 Start - 1 - 1a - 3 - 4 - 3 - 4 - Finish

Baan 3 Start - 1 - 1a - 3 - 4 - 3 - 4 - 3 - 4 - Finish



Baan 4 Start - 1 - 3 - 4 - Finish

Baan 5 Start - 1 - 1a - 2sb/2bb - 1 - 3 - 4 - Finish

Baan 6 Start - 1 - 1a - 2sb/2bb - 1 - 1a - 2sb/2bb - 1 - 3 - 4 - Finish

If the position of Mark 1 has been changed in accordance with RRS 33, then Mark 1a will no longer be a Mark during that race.

## Addendum D Route to Compagnieshaven Enkhuizen

