



Notice of Race

SPORTBOAT CUP 2026

**Open to sportboten and other classes as:
MaxFun 25, J22, Draak, Etchell, FarEast 28R & SB-20**

September 12, 2026 – September 13, 2026

Enkhuizen the Netherlands

Organizing Authority:

Enkhuiser Watersport Vereniging 'Almere' (EWVA)

under the auspices of

the Royal Netherlands Watersport Association (RNWA)

EWVA

Compagnieshaven 3c

1601 ZA Enkhuizen The Netherlands

www.ewva.nl

The notation '[NP]' in a rule means that a boat may not protest another boat for breaking that rule. This changes RRS 60.1

1 RULES

- 1.1 The event is governed by the rules as defined in *The Racing Rules of Sailing (RRS)* . The Prescriptions of the RNWA can be found at [World Sailing - Racing Rules of Sailing](https://www.worldsailing.com/racing-rules-of-sailing)
- 1.2 RRS rules 44.1 and 60.1 will be changed
- 1.3 If there is a conflict between languages the English languages will take precedence.
- 1.4 Every person on board who has his domicile in the Netherlands shall have the appropriate license.
- 1.5 The GDPR declaration which can be found at www.ewval.nl/over-ons privacy statement
- 1.6 RRS Appendix T, Arbitration, applies.

2 SAILING INSTRUCTIONS

The Sailing instructions will be made available on line only at www.ewva.nl on August 1, 2026

3 COMMUNICATION

- 3.1 The Official online notice board is the WhatsApp group "SBC-26 officiële bord". Scan the QR code to join this group.
- 3.2 All boats are advised to have a (handheld) VHF on board that is able to communicate on VHF 88.
- 3.3 [DP] On the water, the race committee will make courtesy broadcasts to competitors on VHF radio channel 88.
- 3.4 [DP] Except in emergency situations, while racing a boat shall not transmit or receive speech or data that is not available to all boats.



4 ELIGIBILITY AND ENTRY

- 4.1 The regatta is open to all boats of Yngling, SB 20, Max Fun 25, J22, FarEast 28R, Etchel and Draak.
- 4.2 Boats can register for the event at www.ewva.nl
- 4.3 To be considered an entry in the event, a boat shall complete all registration requirements and pay all fees by September 5, 2026 at the latest.

5 FEES

- 5.1 The entry fee includes craning, trailer and berthing or standing place from Thursday to Sunday in the Compagnieshaven. The Saturday "Steigerborrel" and BBQ are included.

Class	Before 1 st of September	After 1 st of September
Max Fun 25 and FarEast 28R	175	225
J22, Etchel, SB20, Draak and Yngling	155	175
Entry closes on September 5, 2026		

6 **CREW LIMITATIONS** Not applicable Entry

7 [NP] ADVERTISING

Boats may be required to display advertising selected and provided by the Organizing Authority.

8 **QUALIFYING AND FINAL SERIES** Not applicable

9 SCHEDULE

The Schedule of Racing is shown in the table below

DATE	EVENTS	IMES
11 September 2026	Registration.	16.00 to 21.00 hrs
13 September 2026	First warning signal. Three races are scheduled.	11.55 hrs
12 September 2026	First warning signal. Two races are scheduled. Price giving a.s.a.p.	10.55 hrs

- 9.2 A total number of number 5 races are scheduled.
 9.3 One extra race per day may be sailed, due to weather predictions for the coming days.
 9.4 On the last day of the regatta no warning signal will be made after 15.00 hrs.

11 EQUIPMENT INSPECTION

- 11.1 Each boat shall produce or verify a valid measurement.
 11.2 [DP] Boat may be inspected at any time. .
 11.3 [DP] Boats shall also comply with RRS 78.1 when presented for inspection.

11 CLOTHING AND EQUIPMENT Not applicable.

12 VENUE

- 12.1 The race office is located in the EWVA clubhouse.
 Compagnieshaven 3, 1601 ZA Enkhuizen. Mobile 0623353660
 12.2 NoR Appendix A shows the map of the event location .
 12.3 NoR Appendix B shows the location of the racing areas.
 12.4 NoR Appendix D shows the route to the event location.

13 COURSES

- 13.1 NoR Appendix C shows the course.
 13.2 The target time of a race will be 70 minutes

14 PENALTY SYSTEM

For all boat(s) RRS 44.1 is changed so that the Two-Turns Penalty is replaced by the One-Turn Penalty.

15 SCORING

- 15.1 Four races are required to be completed to constitute a championship.
 15.2 When fewer than five races have been completed, a boat's series score will be the total of her race scores.
 15.3 When 5, 6, 7 or 8 races have been completed, a boat's series score will be the total of her race scores excluding her worst score.
 15.4 RRS 90.3(e) applies, only for the final results.

16 SUPPORT PERSON VESSELS Not applicable

17 CHARTERED OR LOANED BOATS Not applicable

18 [DP] BERTHING

Boats shall be kept in their assigned places in the Compagnieshaven.

19 [DP] HAUL OUT RESTRICTIONS

Boats shall not be hauled out during the regatta except with and according to the terms of prior written permission of the race committee.

20 [DP] DIVING EQUIPMENT AND PLASTIC POOLS

20.1 Underwater breathing apparatus and plastic pools or their equivalent shall not be used around keel boats between the preparatory signal of the first race and the end of the event.

20.2 Boats shall not be cleaned below the waterline by any means from one hour before first start on September 12, 2026 until after the finish of the last race on September 13, 2026.

21 RISK STATEMENT

The participant releases the Organizing Authority and all organisations, companies and persons involved in this competition from liability for damage, personal injury, death and/or loss of property, and submits to rules stated in the Announcement and Competition Rules.

22 INSURANCE

Each participating boat shall be insured with valid third-party liability insurance with a minimum cover of Euro 1.500.000 or the equivalent per incident.

23 PRIZES

Prizes will be awarded to every boat of the first, second and third ranked boat in the event.

24 ORGANAZATION

Race Committee:

Henk Plaatje (Race Officer)

Marcel Keesman (2^e Race Officer)

25 FUTHER INFORMATION

25.1 The Yacht Club EWVA is open before and after racing.

25.2 After the last race, the prize giving will be at the Yacht Club EWVA .

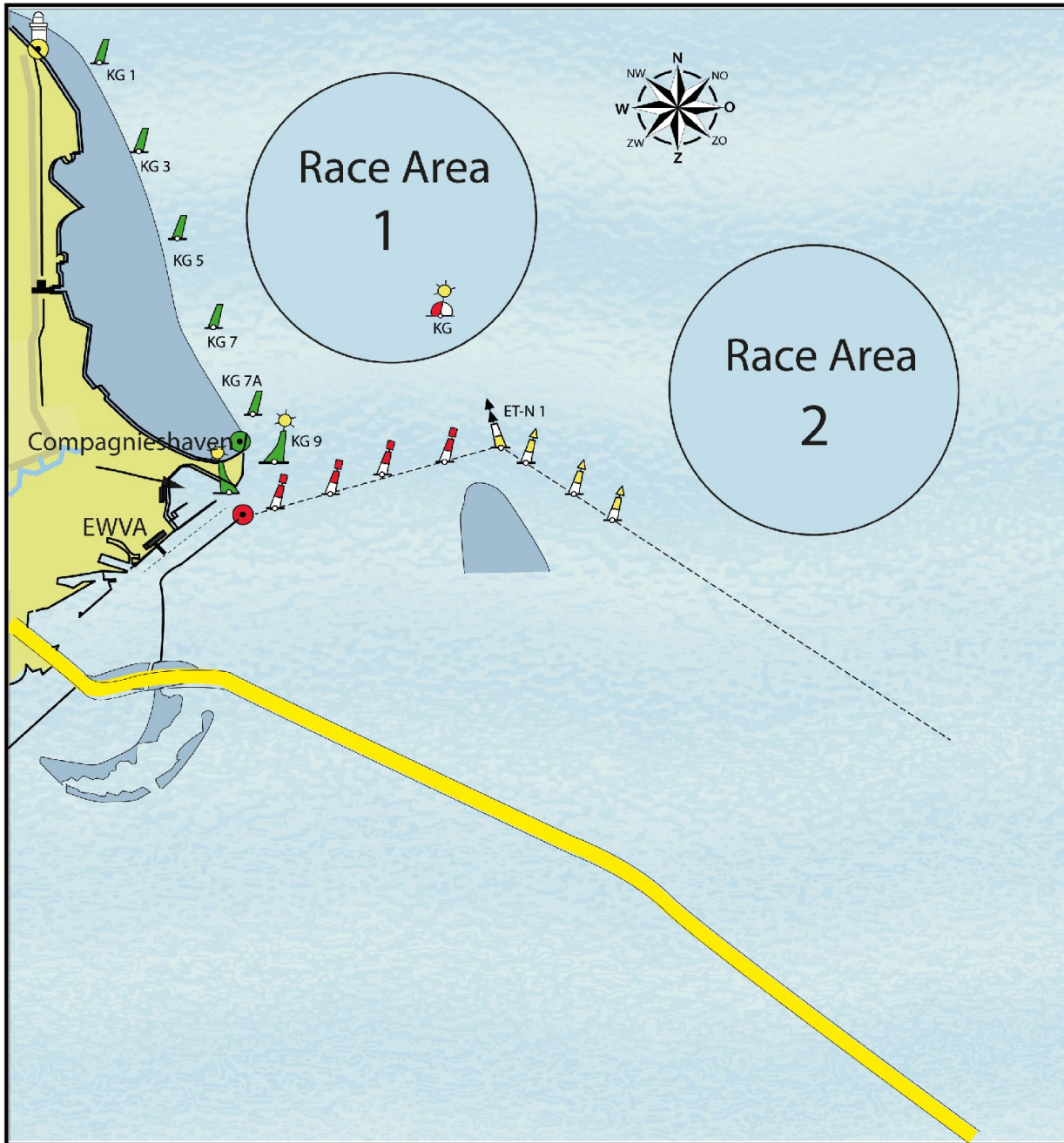
Enkhuiser Watersport Vereniging 'Almere' EWVA Compagnieshaven 3c
1601 ZA Enkhuisen The Netherlands www.EWVA.nl

Addendum A Event location



1. EWVA Clubhouse (Race Office, BBQ)
2. KNRM (Juryroom)
3. Crane
4. Slipway
5. Trailer parking
6. Harbourmaster / Toilet building
7. Minimarket
8. Joosten Yacht Supplies Shop

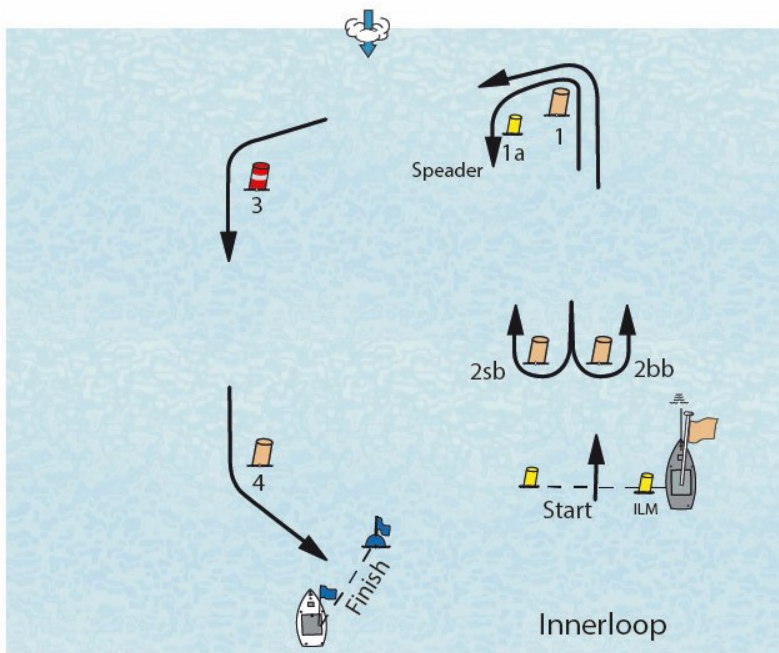
Addendum B Race Area



Addendum C The Courses



- Baan 1 Start - 1 - 1a - 3 - 4 - Finish
 Baan 2 Start - 1 - 1a - 3 - 4 - 3 - 4 - Finish
 Baan 3 Start - 1 - 1a - 3 - 4 - 3 - 4 - 3 - 4 - Finish



- Baan 4 Start - 1 - 3 - 4 - Finish
 Baan 5 Start - 1 - 1a - 2sb/2bb - 1 - 3 - 4 - Finish
 Baan 6 Start - 1 - 1a - 2sb/2bb - 1 - 1a - 2sb/2bb - 1 - 3 - 4 - Finish

If the position of Mark 1 has been changed in accordance with RRS 33, then Mark 1a will no longer be a Mark during that race.

