



Notice of Race

SPORTBOAT CUP

Open Dutch Championship

Yngling 2024

14 September – 15 September 2024

Enkhuizen the Netherlands

Organizing Authority:

Enkhuizer Watersport Vereniging 'Almere' (EWVA)

under the auspices of

the Royal Netherlands Watersport Association (RNWA)

EWVA Clubhouse
Compagnieshaven 3c
1601 ZA Enkhuizen The Netherlands

www.ewva.nl

The notation '[NP]' in a rule means that a boat may not protest another boat for breaking that rule. This changes RRS 60.1(a)

The notation '[SP]' in a rule means that the race committee can impose a standard penalty without a hearing.

1 RULES

- 1.1 The event is governed by the rules as defined in *The Racing Rules of Sailing (RRS)*.
- 1.2 The Prescriptions of the RNWA will apply:
https://www.sailing.org/documents/racingrules/national_prescriptions.php
- 1.3. The RNWA 'Rules for Championships Sailing, Windsurfing and kiteboarding' will apply:
<https://www.watersportverbond.nl/media/rmxdy253/reglement-voor-kampioenschappen-20230221-v7.pdf>
- 1.4 If there is a conflict between languages the English text will take precedence.
- 1.5 Every person on board who has his domicile in the Netherlands shall have the appropriate license.
- 1.6 The GDPR declaration which can be found at EWVA.nl
- 1.7 RRS Appendix T, Arbitration, applies.

2 SAILING INSTRUCTIONS

The Sailing instructions will be made available on line only at www.ewva.nl on August 1, 2024.

3 COMMUNICATION

- 3.1 The Official online notice board is the WhatsApp group "SBC-24 officiële bord". Scan the QR code to join this group.
- 3.2 All boats are advised to have a (handheld) VHF on board that is able to communicate on channel 88.
- 3.3 [DP] On the water, the race committee will make courtesy broadcasts to competitors on VHF channel 88.
- 3.4 [DP] Except in emergency situations, while racing a boat shall not transmit or receive speech or data that is not available to all boats.



4 ELIGIBILITY AND ENTRY

- 4.1 The regatta is open to all boats of the Yngling Class.
- 4.2 Boats can register for the event at www.ewva.nl
- 4.3 To be considered an entry in the event, a boat shall complete all registration requirements and pay all fees by September 12 2024.

5 FEES

- 5.1 The entry fee includes craning, trailer and berthing or standing place from Friday to Sunday in the Compagnieshaven.
 The Saturday "Steigerborrel" and BBQ are included.

| Class | Before August 20 | After August 20 |
|--|------------------|-----------------|
| Yngling | 155 | 175 |
| Registration closes on September 8, 2024 | | |

6 CREW LIMITATIONS Not applicable

7 [NP] ADVERTISING

Boats may be required to display advertising selected and provided by the Organizing Authority.

8 QUALIFYING AND FINAL SERIES Not applicable

9 SCHEDULE

- 9.1 Registration takes place on Friday 14 September from 16:00 to 21:00, and on Saturday 14 September from 08:30 to 09:30.
- 9.2 Four races are planned on both days, first warning signal at 10:55 hrs.
- 9.3 On Sunday no warning signal will be made after 15.00 hrs.

9.4 On Saturday after the races there is a “Steigerborrel”: drinks for everyone (Appendix A, location 3), and a barbeque in the EWVA clubhouse (Appendix A, location 1).

10 EQUIPMENT INSPECTION

- 10.1 A boat or equipment may be inspected at any time for compliance with the class rules, announcement and race regulations.
- 10.2 Each boat shall produce or verify a valid measurement certificate.
- 10.3 [DP] Boats may be inspected at any time.
- 10.4 [DP] Boats shall also comply with RRS 78.1 when presented for inspection.

11 CLOTHING AND EQUIPMENT Not applicable

12 VENUE

- 12.1 The race office is located in the EWVA clubhouse.
Compagnieshaven 3, 1601 ZA Enkhuisen. Mobile 0623353660
- 12.2 NoR Appendix A shows the map of the event location .
- 12.3 NoR Appendix B shows the location of the racing areas.
- 12.4 NoR Appendix D shows the route to the event location.

13 COURSES

NoR Appendix C shows the windward-leeward course with a downwind finish.

14 PENALTY SYSTEM

For all boat(s) RRS 44.1 is changed so that the Two-Turns Penalty is replaced by the One-Turn Penalty.

15 SCORING

- 15.1 Four races are required to be completed to constitute a championship.
- 15.2 When fewer than 5 races have been completed, a boat’s series score will be the total of her race scores.
- 15.3 When 5 or more races have been completed, a boat’s series score will be the total of her race scores excluding her worst score.
- 15.4 RRS 90.3(e) applies, only for the final results

16 SUPPORT PERSON VESSELS Not applicable

17 CHARTERED OR LOANED BOATS Not applicable

18 [DP] BERTHING

Boats shall be kept in their assigned places in the Compagnieshaven.

19 [DP] HAUL OUT RESTRICTIONS

Boats shall not be hauled out during the regatta except with and according to the terms of prior written permission of the race committee.

20 [DP] DIVING EQUIPMENT AND PLASTIC POOLS

- 20.1 Underwater breathing apparatus and plastic pools or their equivalent shall not be used around keel boats between the preparatory signal of the first race and the end of the event.
- 20.2 Boats shall not be cleaned below the waterline by any means from 14 September until 15 September 18:00.

21 RISK STATEMENT

The participant releases the Organizing Authority and all organisations, companies and persons involved in this competition from liability for damage, personal injury, death and/or loss of property, and submits to rules stated in the Announcement and Competition Rules.

22 INSURANCE

Each participating boat shall be insured with valid third-party liability insurance with a minimum cover of Euro 1.500.000 or the equivalent per incident.

23 PRIZES

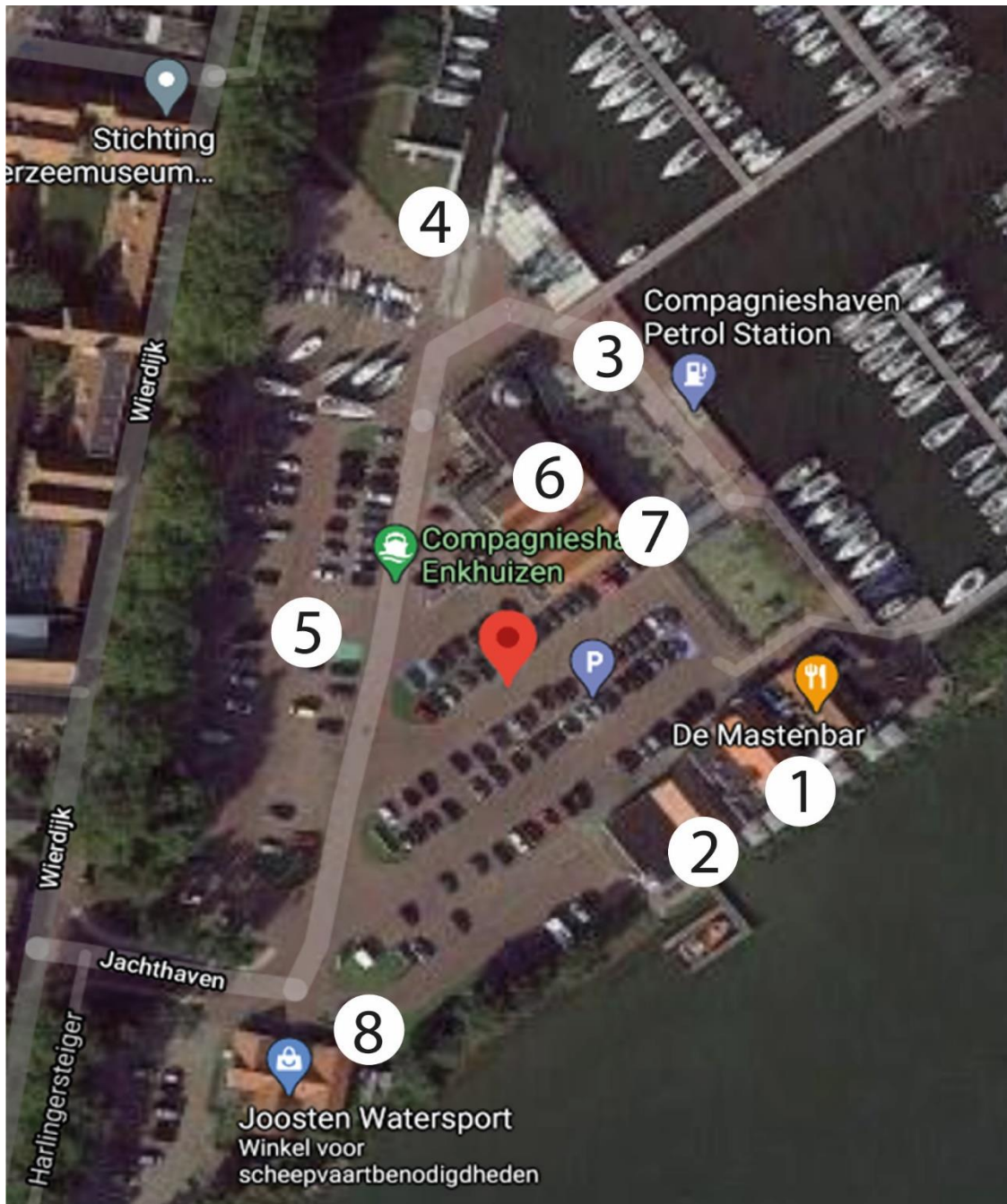
23.1 The crew of the winning boat acquires the title "Dutch Champion".

23.2 The RNWA supplies for the winning boat or team a blue pennant and a medal for every member of the crew of the first three boats or crews (there will be no extra medals available for changes in the crew during the championship).

24 ORGANAZATION

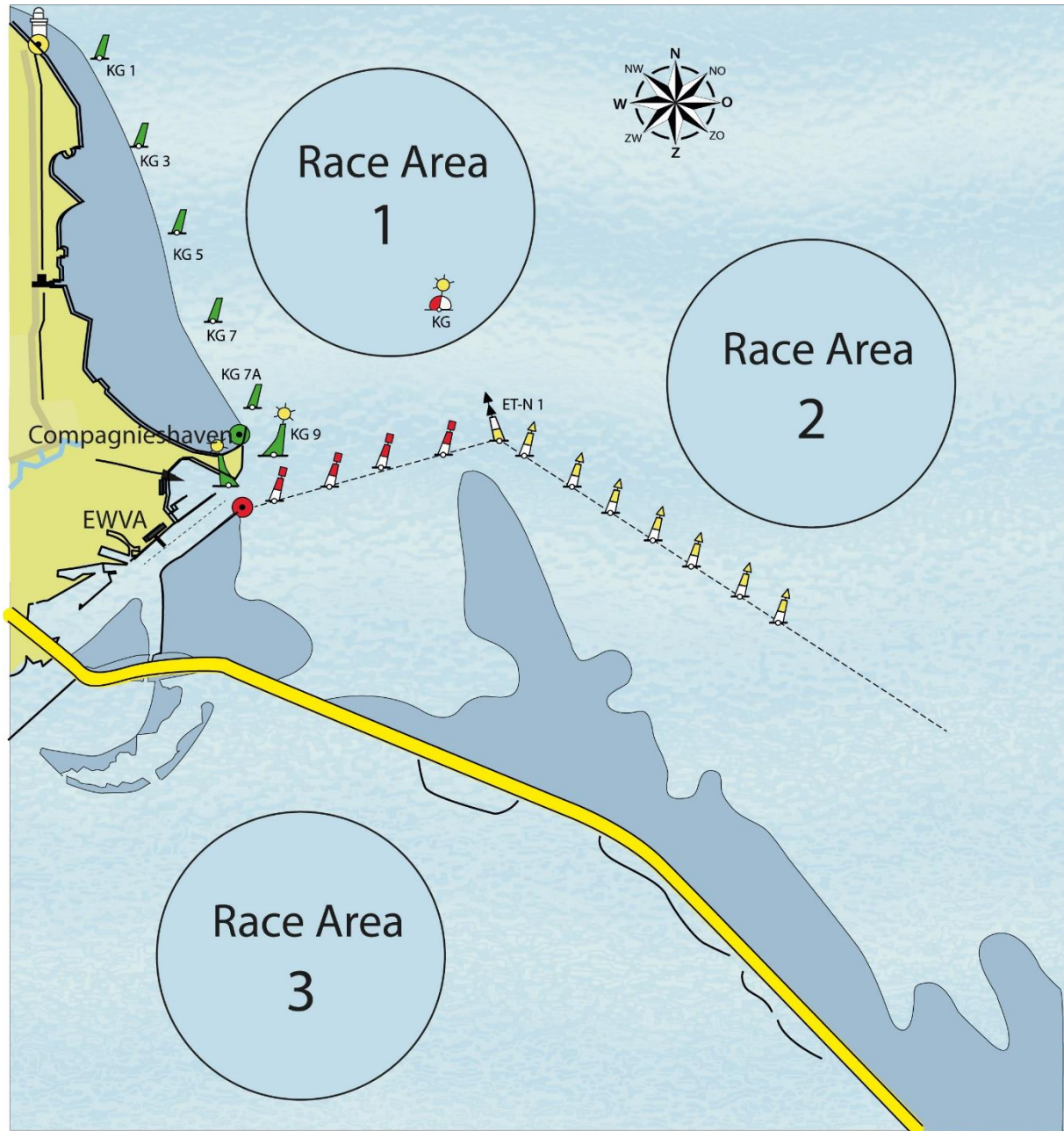
Race Committee: Henk Plaatje (Race Officer)
 Marcel Keesman (2^e Race Officer)
Protest Committee: Jan Verjaal (Chairman)

Appendix A Event location

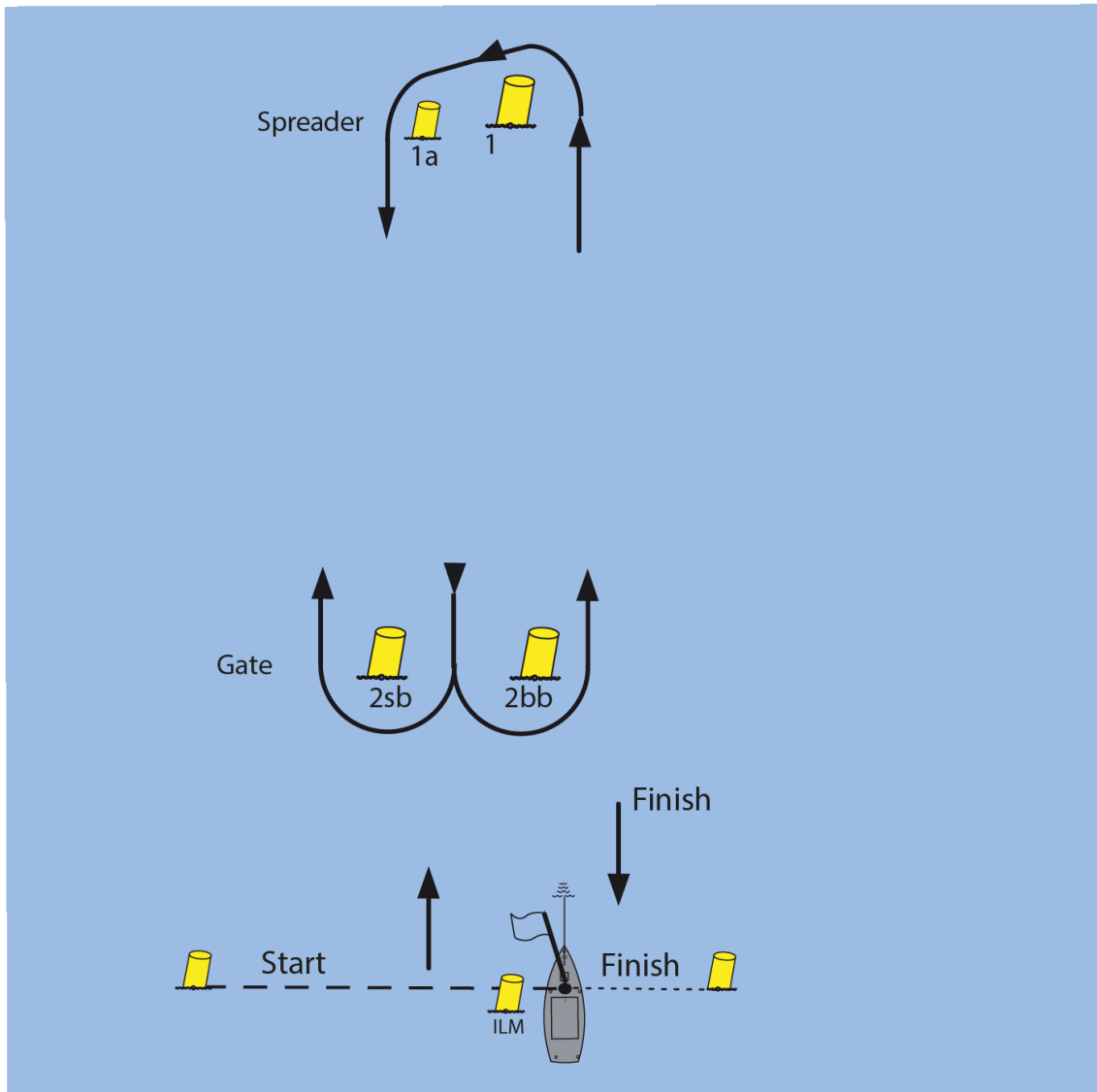


- 1 EWVA Clubhouse (Race Office, BBQ)
- 2 KNRM (Juryroom)
- 3 Crane / Steigerborrel
- 4 Slipway
- 5 Trailer parking
- 6 Harbourmaster / Toilet building
- 7 Minimarket
- 8 Joosten Yacht Supplies Shop

Appendix B Race Area



Appendix C The Courses



Course Nr. Order of the Marks

- | | |
|---|---|
| 1 | Start – 1- 1a – Finish |
| 2 | Start – 1- 1a – 2bb/2sb – 1 - 1a – Finish |
| 3 | Start – 1- 1a – 2bb/2sb – 1 - 1a – 2bb/2sb – 1 - 1a – Finish |
| 4 | Start – 1- 1a – 2bb/2sb – 1 - 1a – 2bb/2sb – 1 - 1a – 2bb/2sb – 1 - 1a – Finish |

- C1 In the last leg to the finish Marks 2a/2b are not marks of the course.
- C2 If the position of Mark 1 has been changed in accordance with RRS 33, then Mark 1a will no longer be a Mark during that race.

Appendix D Route to Compagnieshaven Enkhuizen

