



Notice of Race

Open Dutch Championship

DRAGON CLASS 2025

September 19, 2025 – September 21, 2025

Enkhuizen the Netherlands

Organizing Authority:
Enkhuizer Watersport Vereniging 'Almere' (EWVA)
under the auspices of
the Royal Netherlands Watersport Association (RNWA)
and the Dutch Dragon Association

EWVA
Compagnieshaven 3c
1601 ZA Enkhuizen The Netherlands

www.ewva.nl

The notation '[NP]' in a rule means that a boat may not protest another boat for breaking that rule. This changes RRS 60.1

1 RULES

- 1.1 The event is governed by the rules as defined in *The Racing Rules of Sailing (RRS)* . The Prescriptions of the RNWA can be found at [World Sailing - Racing Rules of Sailing](https://www.worldsailing.org/racing-rules-of-sailing)
- 1.2 The 'Rules for Open Championships Sailing, Windsurfing and Kiteboarding' will apply.
- 1.3. Racing rules 60.1 and 44.1 will be changed
- 1.4 If there is a conflict between languages the English languages will take precedence.
- 1.5 Every person on board who has his domicile in the Netherlands shall have the appropriate license.
- 1.6 The GDPR declaration which can be found at www.ewva.nl
- 1.7 RRS Appendix T, Arbitration, applies.
- 1.8 Under RRS 87, the crew weight restriction in rule 13.30 of the International Dragon Class Rules will not apply.

2 SAILING INSTRUCTIONS

The Sailing instructions will be made available on line only at www.ewva.nl on August 1, 2025

3 COMMUNICATION

- 3.1 The Official online notice board is the WhatsApp group "Dragon-25 officiële bord". Scan the QR code to join this group.
- 3.2 All boats are advised to have a (handheld) VHF on board that is able to communicate on VHF 88.
- 3.3 [DP] On the water, the race committee will make courtesy broadcasts to competitors on VHF radio channel 88.
- 3.4 [DP] Except in emergency situations, while racing a boat shall not transmit or receive speech or data that is not available to all boats.



4 ELIGIBILITY AND ENTRY

- 4.1 The regatta is open to all boats of the Dragon Class **with valid measurement certificate and insurance.**
- 4.2 Boats can register for the event at www.ewva.nl
- 4.3 To be considered an entry in the event, a boat shall complete all registration requirements and pay all fees by September 15, 2025 at the latest.

5 FEES

- 5.1 The entry fee includes craning, parking, trailer and berthing in the Compagnieshaven. The Dragon Dinner is not included. Reservations for the Dragon Dinner are possible **via the event website registration form.**

Class	Before September 1	After September 1
Dragon	370	410
Registration closes on September 15, 2025		

6 CREW LIMITATIONS Not applicable

7 [NP] ADVERTISING

Boats may be required to display advertising selected and provided by the Organizing Authority.

8 QUALIFYING AND FINAL SERIES Not applicable

9 SCHEDULE

9.1 The Schedule of Racing is shown in the table below

CRANING		Times
17 September 2025	Craning	09:00 – 17:00
18 September 2025	Craning	09:00 – 17:00
19 September 2025	Craning	08:00-10:00

DATE	EVENTS	Times
18 September 2025	Registration.	16.00 to 21.00 hrs
19 September 2025	First warning signal. Three races are scheduled.	11.55 hrs
20 September 2025	First warning signal. Three races are scheduled.	10.55 hrs
21 September 2025	First warning signal. Two races are scheduled. Price giving a.s.a.p.	10.55 hrs

- 9.2. A total number of number 8 races are scheduled.
 9.3. One extra race per day may be sailed, due to weather predictions for the coming days.
 9.4. On the last day of the regatta no warning signal will be made after 15.00 hrs.

10 EQUIPMENT INSPECTION

- 10.1 Each boat shall produce or verify a valid measurement.
 10.2 Boat may be inspected at any time.
 10.3 [DP] Boats shall also comply with RRS 78.1 when presented for inspection.

11 CLOTHING AND EQUIPMENT Not applicable

12 VENUE

- 12.1 The race office is located in the EWVA clubhouse.
 12.2 NoR Appendix A shows the map of the event location .
 12.3 NoR Appendix B shows the location of the racing areas.
 12.4 NoR Appendix D shows the route to the event location.

13 COURSES

- 13.1 NoR Appendix C shows the windward-leeward course with a upwind finish.
 13.2 The target time of a race will be 70 minutes

14 PENALTY SYSTEM

For all boat(s) RRS 44.1 is changed so that the Two-Turns Penalty is replaced by the One-Turn Penalty.

15 SCORING

- 15.1 Four races are required to be completed to constitute a championship.
 15.2 When fewer than five races have been completed, a boat's series score will be the total of her race scores.
 15.3 When 5, 6, 7 or 8 races have been completed, a boat's series score will be the total of her race scores excluding her worst score.
 15.4 RRS 90.3(e) applies, only for the final results.

16 SUPPORT PERSON VESSELS Not applicable

17 CHARTERED OR LOANED BOATS Not applicable

18 [DP] BERTHING

Boats shall be kept in their assigned places in the Compagnieshaven.

19 [DP] HAUL OUT RESTRICTIONS

Boats shall not be hauled out during the regatta except with and according to the terms of prior written permission of the race committee.

20 [DP] DIVING EQUIPMENT AND PLASTIC POOLS

20.1 Underwater breathing apparatus and plastic pools or their equivalent shall not be used around keel boats between the preparatory signal of the first race and the end of the event.

20.2 Boats shall not be cleaned below the waterline by any means from one hour before first start on September 19, 2025 until after the finish of the last race on September 21, 2025.

21 RISK STATEMENT

21.1 RRS 3 states: 'The responsibility for a boat's decision to participate in a race or to continue to race is hers alone.' By participating in this event each competitor agrees and acknowledges that sailing is a potentially dangerous activity with inherent risks. These risks include strong winds and rough seas, sudden changes in weather, failure of equipment, boat handling errors, poor seamanship by other boats, loss of balance on an unstable platform and fatigue resulting in increased risk of injury. Inherent in the sport of sailing is the risk of permanent, catastrophic injury or death by drowning, trauma, hypothermia or other causes.

21.2 The organizing authority will not accept any liability for material damage or personal injury or death sustained in conjunction with or prior to, during, or after the regatta.

22 INSURANCE

Each participating boat shall be insured with valid third-party liability insurance with a minimum cover of Euro 1.500.000 or the equivalent per incident.

23 PRIZES

23.1 Helmsman and crew of the winning boat of the Dutch Championship acquire the title "Dutch Champion" and receive the accompanying medal(s) of the

RNWA The responsible person of the winning boat acquires the Blue Pennant of the **RNWA**.

23.1 **At** disposal of the Dutch Dragon Association the winner of the Dutch Championship shall be awarded

The Silver Dragon Challenge Trophy and will have this for one year (this prize will remain in Netherlands).

23.1 Prizes will be awarded to every member of the crew of the first, second and third ranked boat in the event.

23.1 At disposal of the Dutch Dragon Association the Theodoor Gillissen Trophée will be awarded to the first placed boat, without discard, on Saturday evening. The responsible person of the winning boat shall be awarded a challenge trophy.

25 ORGANAZATION

Race Committee: Henk Plaatje (Race Officer)
 Marcel Keesman (2° Race Officer)
 Protest Committee: Jan Verjaal (Chairman)

FUTHER INFORMATION

- 26.1. The Yacht Club EWVA is open before and after racing.
- 26.2 On Friday 19th September, 2025 after the races there will be a Skippers meeting at the Yacht Club .
- 26.3 On Saturday 20th September, 2025 there will be a Dragon **dinner**-party.
- 25.4. After the last race, the prize giving will be at the Yacht Club EWVA .

Enkhuizer Watersport Vereniging 'Almere' EWVA
Compagnieshaven 3c
1601 ZA Enkhuizen The Netherlands
www.ewva.nl

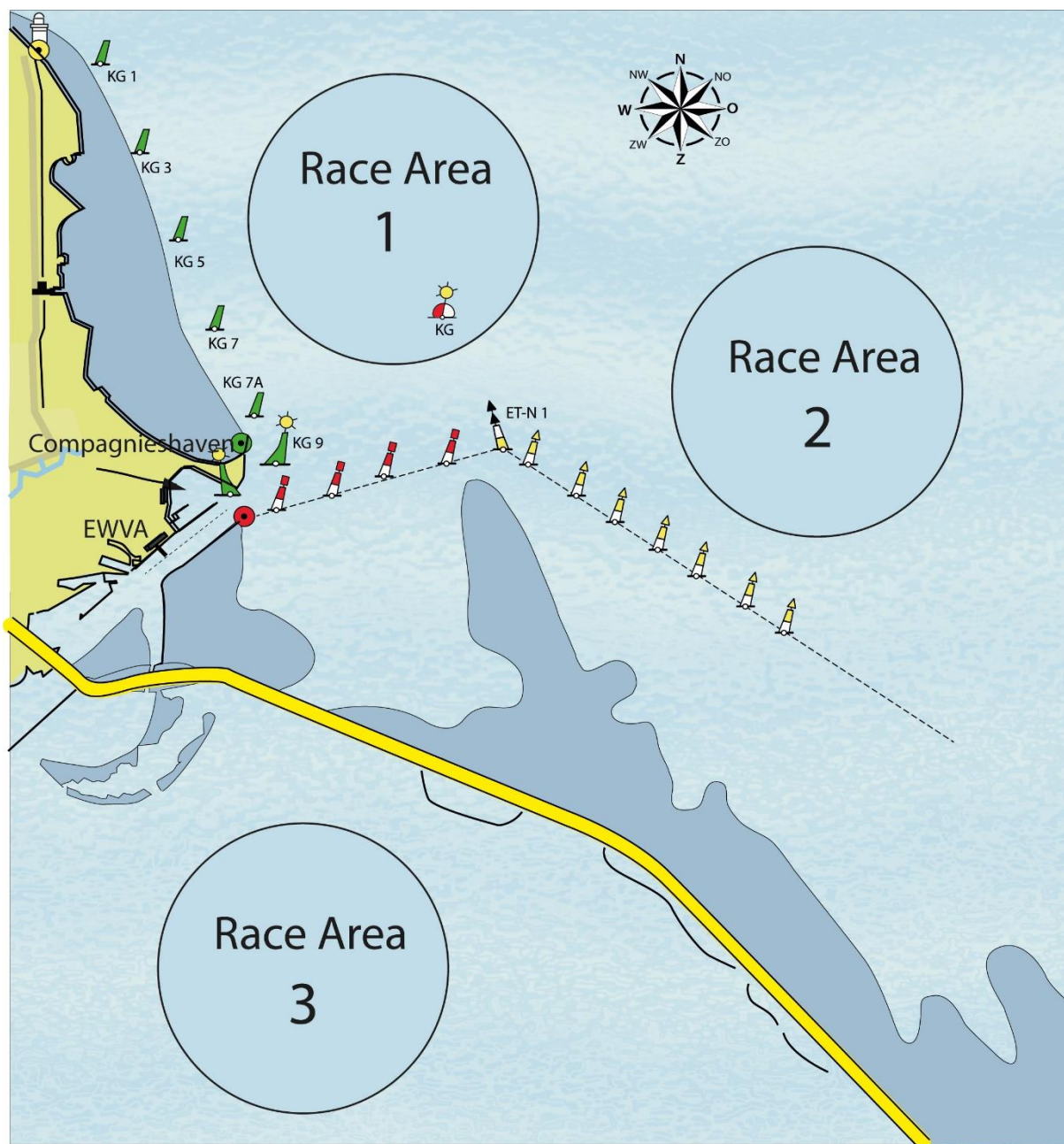
Dutch Dragon **Class** Association (NDC)
www.dragonclass.nl
email: info@dragonclass.nl

Appendix A Event location

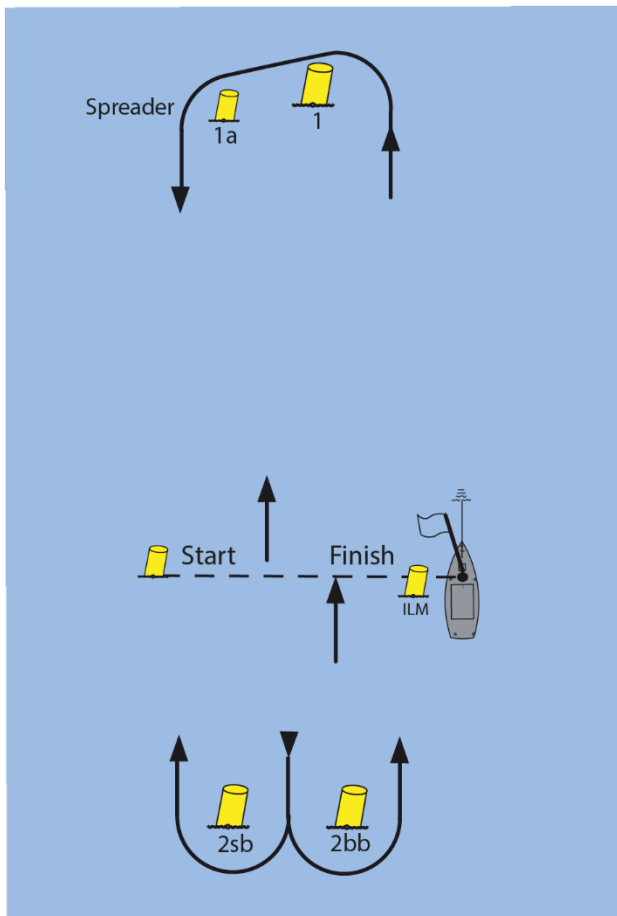


- 1 EWVA Clubhouse (Race Office, BBQ)
- 2 KNRM (Juryroom)
- 3 Crane
- 4 Slipway
- 5 Trailer parking
- 6 Harbourmaster / Toilet building
- 7 Minimarket
- 8 Joosten Yacht Supplies Shop

Appendix B Race Area



Appendix C The Courses



Windward – Leeward with spreader
In de wind finish

Order of marks
Start - 1- 1a – 2bb/2sb - 1 - 1a – 2bb/2sb - Finish

Appendix D Route to Compagnieshaven Enkhuizen

